

POWER-SPREAD

plus⁺

QUALITY. STABILITY. FLEXIBILITY.

HB BRANTNER





THE SUMMIT STRIKER

Mountain spreader

Our single-axle mountain spreader with spreader unit passage heights from 810 to 1,085 mm offers a wide range of additional equipment for more comfort. With total weights from 5500 to 8000 kg and tyres that are gentle on the ground, it is equipped for any application. The wide axle allows the frame to be mounted close to the ground. This means that the team stays on track even on the steepest slopes.

Many equipment options turn even the smallest mountain spreader into a professional machine.

+ SAFE ON THE MOUNTAIN

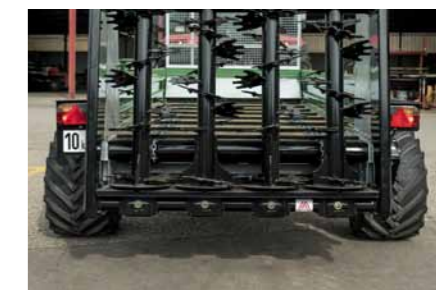
- Extra wide track for safe driving on difficult terrain
- Lower chassis for optimised centre of gravity
- external wheels in various dimensions
- Spreading unit F4V fine spreading unit with four vertical milling rollers



Stepless scraper floor drive a robust gearbox mounted in an oil bath on all Brantner spreaders



BRANTNER advantage automatic chain tensioner as standard



Track widths with 2150/2200 mm for all mountain spreader types

Manure spreader

Single-axle and tandem chassis with spreading unit Clearance heights from 810 to 1,250 mm and total weights from 5,500 to 12,000 kg.

Our manure spreaders are available with different spreading unit designs. These include a fine spreading unit with 4 up-right or 2 horizontal spreading rollers as well as a universal spreading unit with 2 horizontal milling rollers and disc spreading unit.

All versions come with a protective grille and HB side wall system as standard.

+ **STRONG IN THE FIELD**

- Drives via oil gearboxes
- Milling tines made of wear-resistant Hardox special steel
- Extensive range of hydraulic controls (see p. 8)
- Automatic brake lever, hydraulic or pneumatic brake possible.



Closures for quick assembly and disassembly



Large protective grid protects against stone chipping and offers optimal visibility into the load compartment



Unique cathodic dip coating & powder coating ideal protection against corrosion



Universal spreading unit the CL2-2 compost spreader with two horizontal milling rollers and spreading discs



Spreading unit F2H fine spreading unit with two horizontal milling rollers



Innovation by Brantner optional hydraulic steering axle

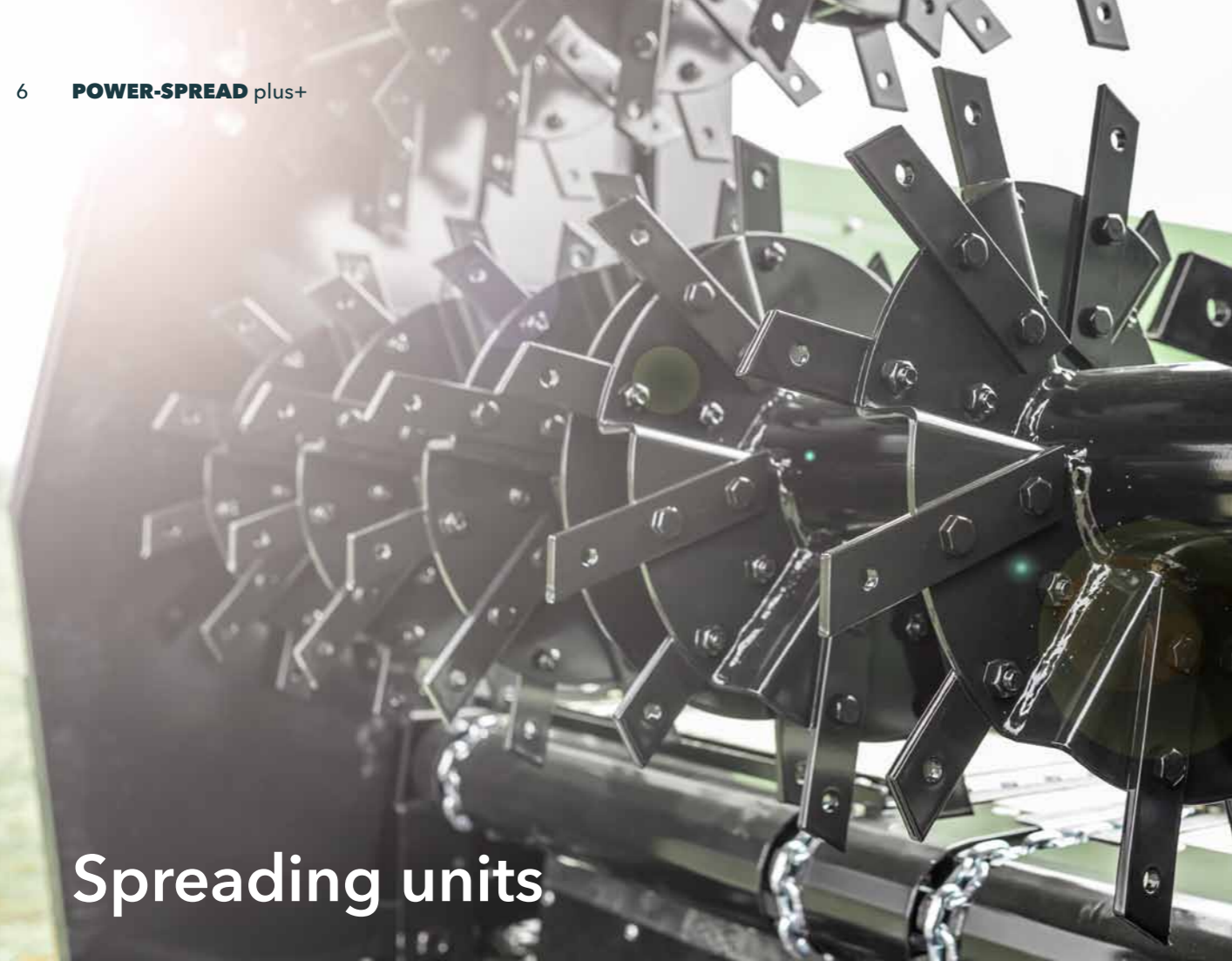
+ **QUALITY THAT BEARS FRUIT**

- Narrow design
- compact application technology
- optimised for wine, fruit and vegetable farms
- extensive selection of optional equipment

Single-axle chassis with spreader unit passage heights of 920 mm and total weights of 6000 or 6500 kg.

Our orchard and vineyard spreaders are equipped as standard with a spreading unit with spreading discs and optionally with a steering axle for optimal accessibility of the rows.

Fruit and Vineyard spreader



Spreading units

Quick-release fasteners for rapid assembly, milling tines made of wear-resistant Hardox special steel.

Individually balanced rollers for optimum running smoothness.

Screwed tines, can be used on both sides.

Wide-angle drive shaft with overload protection as standard.

Central drive via oil bath gearbox.

Spreading unit from own production.
100 % Made in Austria



F2H



F4V



F4V Profi



CL2-2



CS2-2

Additional equipment



- 01** Spreading unit protection hydraulic
- 02** Boundary spreading device
- 03** Cover hydraulic instead of manual for spreading unit CL2-2/CS2-2
- 04** Retaining wall securing
- 05** Retaining wall hydraulic
- 06** Spreading roller hubs screwable
- 07** Lubrication lines for roller bearings

Technical data

Model	Spreading rollers/ spreading discs	Arrangement	Clearance height	Rollers Ø	Spread width
F2H	2 / -	horizontal	920 / 1200 mm	470 / 560 mm	approx. 2 m
F4V	4 / -	vertical	810 / 1085 mm	470 / 505 mm	approx. 5 - 8 m
F4V Profi	4 / -	vertical	1085 mm	505 mm	approx. 6 - 8 m
CL2-2	2 / 2	horizontal	920 / 1250 mm	470 / 560 mm	approx. 10 - 20 m
CS2-2	2 / 2	horizontal	1250 mm	560 mm	approx. 10 - 20 m

Controls

STANDARD - CONTROL

Control of the scraper floor via tractor hydraulics (DW).



Steuergerät doppelwirkend (EW)*



Vorschubregelung (DW)**

MANUAL FEED CONTROL

Scraper floor speed adjustable via manual flow divider (DW).



Vorschubregelung elektronisch (DW)**



Vorschubregelung elektronisch (EW)*

ELECTRONIC FEED CONTROL

(with potentiometer) With high-pressure filter for control of the scraper floor flow and return via the control element in the driver's cab.



Vorschubregelung elektronisch mit Zusatzfunktion für Stauwand oder Streuwerkschutz



Vorschubregelung elektronisch mit Zusatzfunktion für Stauwand und Streuwerkschutz

ISOBUS - CONTROL

Convenient control of all functions such as feed, retaining wall, spreading unit protection, speed of spreading rollers via the control terminal of the towing vehicle or your own control terminal.



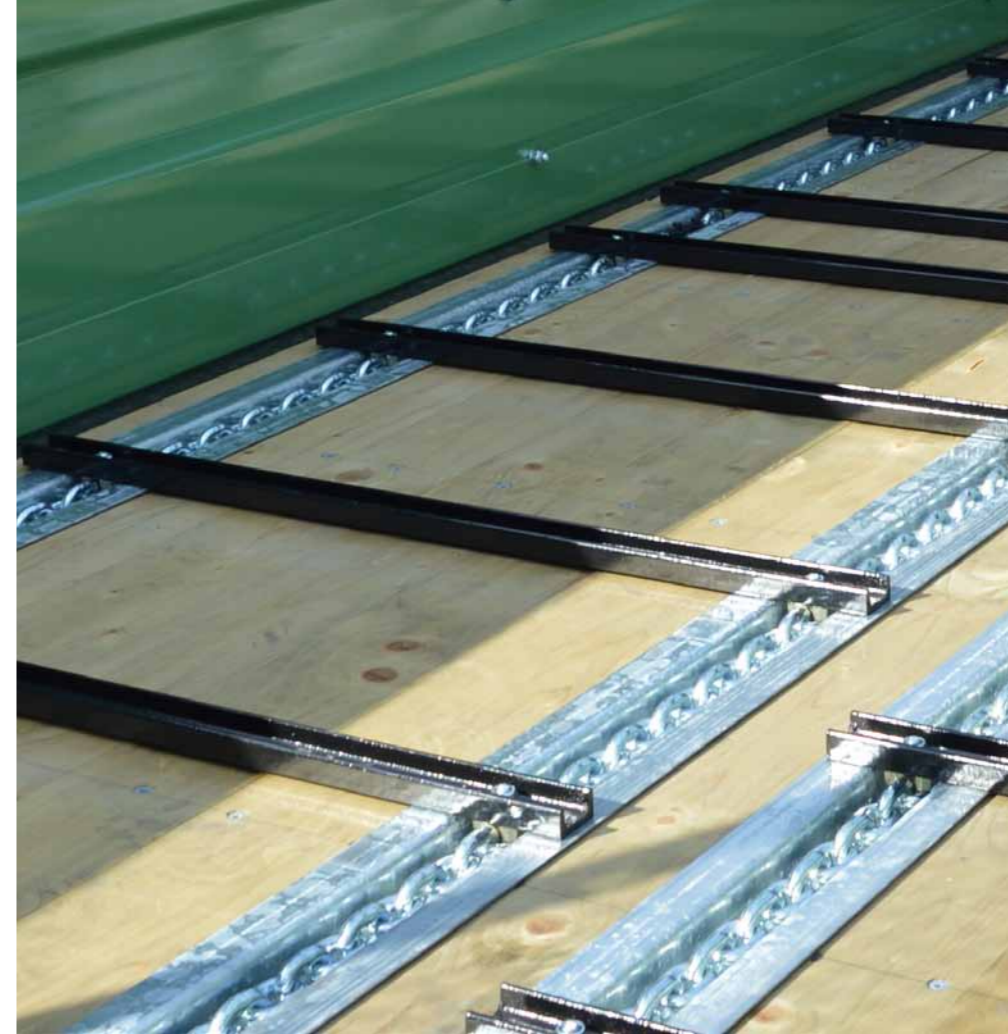
Eigenölversorgung Profi 540/1000



ISOBUS-Steuerung

* (EW) - Minimum requirement, single-acting control unit with unpressurised return flow

** (DW) - Double-acting control unit required



Solid scraper floor design with 2 or 4 chain strands in bolted design.

Scraper floor

Pressure impregnated wooden floor (34 mm thick tongue and groove boards), each board screwed several times to platform frame, flush with outer frame - no dirt accumulation



2 chain strands (round steel chain 10 x 31 mm), breaking load 12.5 t, galvanised, calibrated in pairs



Chain tensioner Automatic chain tensioner with display on front wall



Scraper floor rails made of high-strength U-steel (40 x 20 mm), screwed with chain

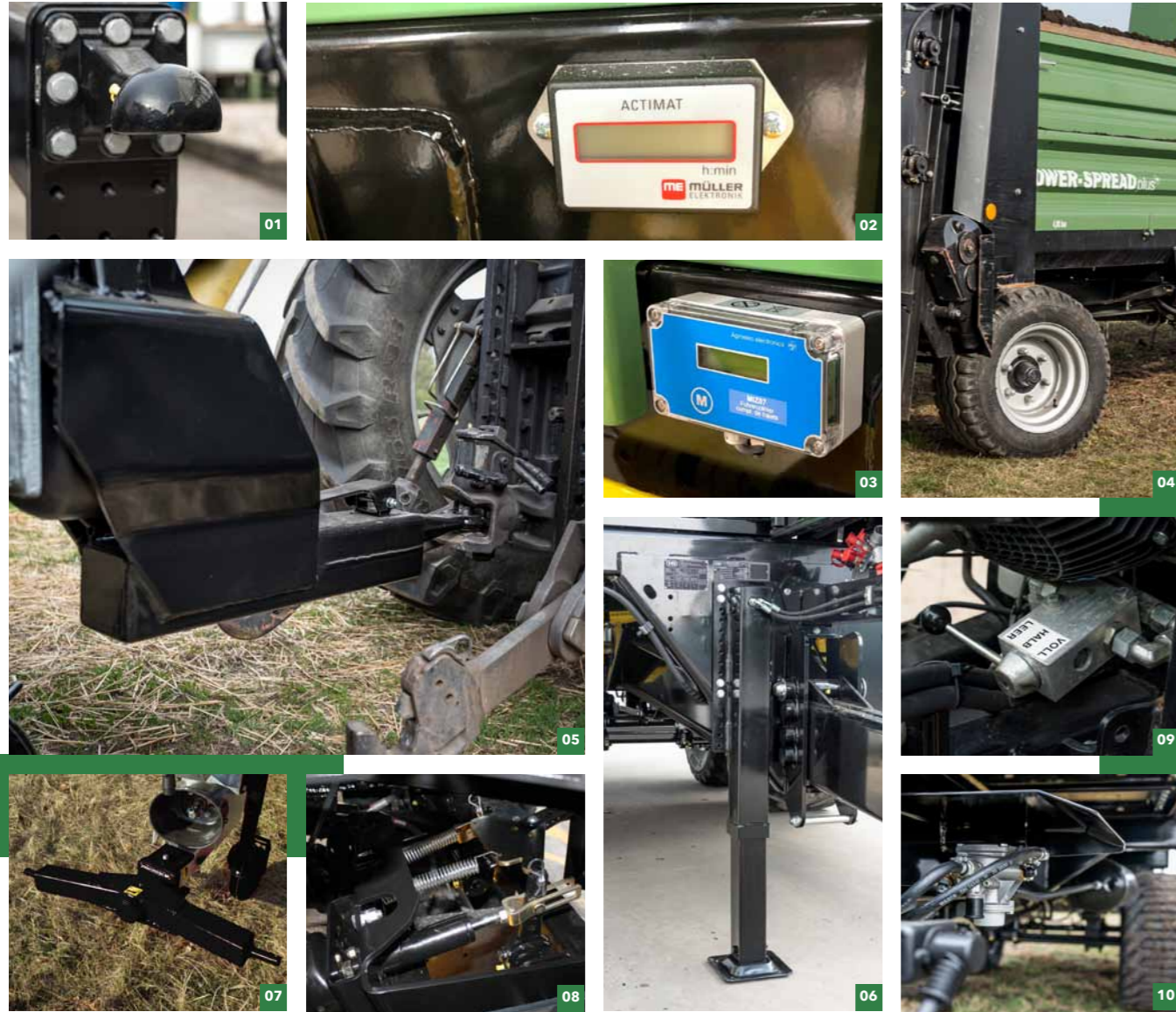


Chains run sunk into the plateau in continuous galvanised guide rails



Deflection chain wheel Made of wear-resistant spheroidal graphite cast iron, optionally also lubricatable via lubrication strip

Additional equipment



CHASSIS

- 01 Flange towing eye K80
- 02 Operating hours counter
- 03 Clock counter incl. operating hours counter
- 04 hydraulic steering axle
- 05 Lower hitch
- 06 hydraulic support leg
- 07 Lower link hitch

BRAKE

- 08 Hydraulic brake
- 09 Load adjustment valve for Hydraulic brake
- 10 2-Circuit Air Brake



BODY

- 01 Document box
- 02 Attachment walls 400 / 500 mm
- 03 increased number of rails
- 04 Wooden strips on top edge of boards
- 05 Retaining wall securing
- 06 Hydraulic retaining wall
- 07 Boards can be folded laterally
- 08 Lubrication lines for scraper floor

Technical data

Models	Mountain spreader			Manure spreader							Vineyard spreader	
	E 5536 B	E 6540 B	E 8045 B	E 5536	E 6540	E 8045	E 9040	E 9545	E 11550	TA 12050	E 6036 W	E 6540 W
Total weight	5.500 kg	6.500 kg	8.000 kg	5.500 kg	6.500 kg	8.000 kg	9.000 kg	9.500 kg	11.500 kg	12.000 kg	6.000 kg	6.500 kg
Dead weight	1.600 kg	1.800 kg	2.000 kg	1.600 kg	1.800 kg	2.000 kg	2.300 kg	2.500 kg	3.500 kg	3.800 kg	1.900 kg	2.000 kg
Support load	1.000 kg	1.200 kg	1.500 kg	1.000 kg	1.200 kg	1.500 kg	1.500 kg	1.800 kg	2.000 kg	2.000 kg	1.300 kg	1.500 kg
Total length	5.470 mm	5.870 mm	6.370 mm	5.470 mm	5.870 mm	6.370 mm	5.870 mm	6.370 mm	7.170 mm	7.170 mm	5.500 mm	5.900 mm
Total width	2.550 mm	2.550 mm	2.770 mm	1.990 mm	1.990 mm	2.070 mm	2.200 mm	2.200 mm	2.250 mm	2.250 mm	1.790 mm	1.790 mm
Loading height	1.250 mm	1.350 mm	1.440 mm	1.490 mm	1.610 mm	1.700 mm	1.680 mm	2.000 mm	2.180 mm	2.100 mm	1.400 mm	1.400 mm
Platform size	3.560 x 1.630 mm	3.960 x 1.630 mm	4.460 x 1.630 mm	3.560 x 1.630 mm	3.960 x 1.630 mm	4.460 x 1.630 mm	3.960 x 1.830 mm	4.460 x 1.830 mm	4.960 x 1.830 mm	4.960 x 1.830 mm	3.560 x 1.430 mm	3.960 x 1.430 mm
Sideboard height	400 mm	500 mm	500 mm	400 mm	500 mm	500 mm	500 mm	800 mm	800 mm	800 mm	400 mm	400 mm
Loading capacity	2,3 m ³	3,2 m ³	3,6 m ³	2,3 m ³	3,2 m ³	3,6 m ³	3,6 m ³	6,5 m ³	7,3 m ³	7,3 m ³	2 m ³	2,5 m ³
Spreading unit as standard	F4V	F4V	F4V	F4V	F4V	F4V	F4V	F4V	F4V	F4V	CL2-2	CL2-2
Spreading unit optional	-	-	-	-	-	-	F4V Profi, CL2-2	F4V Profi, CL2-2, CS2-2	F4V Profi, CL2-2, CS2-2	F4V Profi, CL2-2, CS2-2	F2H	F2H
Clearance height as standard	810 mm	1.085 mm	1.085 mm	810 mm	1.085 mm	1.085 mm	1.085 mm	1.085 mm	1.085 mm	1.085 mm	920 mm	920 mm
Square axle	60 mm	70 mm	80 mm	60 mm	70 mm	80 mm	80 mm	80 mm	90 mm	70 mm	60 mm	60 mm
Track	2.150 mm	2.150 mm	2.200 mm	1.600 mm	1.600 mm	1.700 mm	1.700 mm	1.700 mm	1.700 mm	1.750 mm	1.350 mm	1.350 mm
Support	Support wheel	Support wheel	Support wheel	Support wheel	Support wheel	Support wheel	Support wheel	Support wheel	Seat post winch	Seat post winch	Support wheel	Support wheel
Power requirement	30 kW	37 kW	37 kW	30 kW	37 kW	37 kW	45 kW	45 kW	51 kW	51 kW	37 kW	37 kW
Standard tyres	15.0/55 - 17 (10) AW	15.0/55 - 17 (10) AW	500/50 - 17 (14) AW ET-35	15.0/55 - 17 (10) AW	15.0/55 - 17 (14) AW	500/50 - 17 (14) AW	500/50 - 17 (14) AW	500/50 - 17 (14) AW	550/45 - 22.5(16) AW	500/50 - 17 (14) AW	340/55 - 16 (14) AW	340/55 - 16 (14) AW

Contact

ZENTRALE

HANS BRANTNER & SOHN Fahrzeugbau GesmbH

KR Hans Brantner-Straße 8
 2136 Laa an der Thaya
 T +43 (0) 2522 2511-0
 F +43 (0) 2522 2511-50
 fahrzeugbau@hb-brantner.at
 www.hb-brantner.at

Surface technology. Cathodic dip painting & Powder.

THE ADVANTAGES AT A GLANCE

- excellent corrosion protection outside and inside
- improved mechanical resilience
- environmentally friendly technology through powder circulation system
- Coverage of energy needs by 2 megawatt photovoltaic system

Products that are permanently exposed to extreme conditions require the highest paint quality with excellent corrosion protection. Together with the paint specialist Helios, we have equipped our surface technology system with the latest technology. With this modernization, we can further improve our product quality and at the same time rely on environmentally friendly process technology.



QUALITY.

State-of-the-art manufacturing process with Laser cutting centres, robot welding systems, "high-end" surface technology, line assembly as well as several quality controls and the final test on the brake test stand ensure the highest product quality.

FLEXIBILITY.

The outstanding quality and the individual production according to customer requirements make every product from BRANTNER Fahrzeugbau a unique specimen that sets standards.

STABILITY.

The stability of the product guarantees stability in value retention. And that over decades!

Values across borders.

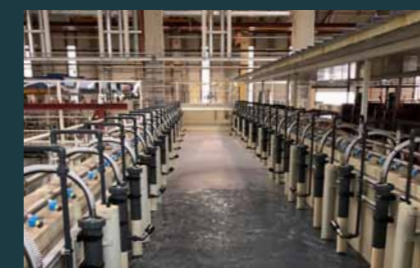


THIS IS HOW KTL POWDER-QUALITY IS CREATED.

- automated granulate blasting
- automatic wet-chemical cleaning
- Cathodic dip painting (KTL)
- Tumble dry at 160 - 180 degrees
- automated POWDER COATING
- Tumble dry at 160 - 180 degrees



Blasting
 mechanical pre-treatment for clean and homogeneous surfaces



KTL & pretreatment
 12 immersion processes for chemical cleaning and subsequent KTL coating



Powder
 automatic powder coating



VEHICLE CONSTRUCTION

HALL CONSTRUCTION

SURFACE TECHNOLOGY

QUALITY. STABILITY. FLEXIBILITY.