

PUSH-OFF TRAILER POWER-PUSH

plus⁺

QUALITY. STABILITY. FLEXIBILITY.

HB BRANTNER



Push-off trailer

From 75 years of experience and more than 135,000 vehicles produced, the new POWER-PUSH plus push-off trailer was created with the help of the most modern construction techniques.

The result of years of development and practical experience is impressive! The variety of types ranges from 16 t to 34 t total weight.

+ STEADY AND STABLE

- Double C chassis frame
- 2 or 3 hard chromed push-off cylinder
- absolutely smooth inner walls
- low wear on the seals
- STABILATOR walls for grain transport without tie rods
- KTL/powder High-end surface technology



TR 34090 PP+ Tridem chassis, 34 tons total weight, 43 or 49 m³ load capacity



Suspension various systems possible, e.g. air suspension or hydraulic suspension



TA 23071 PP+ optionally with hydraulically folding rear underride guard



TA 16055 PP+ with 20 to 26 m³ load capacity



TA 20055 PP+ standard with 2000 mm sideboards



TA 23063 PP+ with a total weight of 20500 to 24000 kg



THE ALL-ROUNDER

Attachments

Both the spreader and the overload snail can be easily mounted on the rear wall mount of your push-off vehicle.

SPREADER F2V

- 2 standing milling drums
- 2 plates with milling tines
- with closed cover
- with an open cover as a fine spreader
- with retaining door as standard
- Spreading width approx. 20 - 24 m

OVERLOAD SNAIL

- Diameter 500mm
- hydraulically foldable
- with internal cross conveyor screw
- center bearing
- electrically adjustable outlet flap
- Output approx. 450 to/h (Grain)



Spread Unit
with two vertical high-performance milling drums, screwed-on reinforced milling tines made of Hardox/Quad steel



Forklift pickup
Easy assembly with forklift/telescopic handler



Overload snail
hydraulically foldable, with cross auger



PTO through drive
for mounting spreaders or overload snail



Chassis

Axle frame double-screwed multiple times inside and outside.

Chassis frame made of closed double-C pressed profile frame for maximum torsional stability, flexural strength and excellent torsional properties.

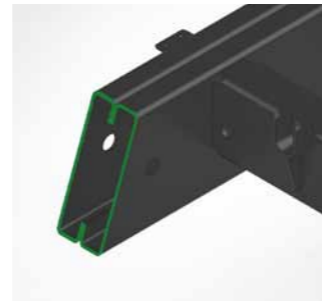
Frame made 100% in-house on modern robotic welding systems.



Axle frame



Multiple times screwed axle frame



Double-C-chassis frame



Hydraulic-mechanical forced steering



Electric forced steering



Self-steering axle



32 to spring unit with reinforced balancing rocker

The absolute top model in the professional segment. Excellent suspension behavior, which protects the load and the vehicle against knocks and bumps.

Suspension



Spring stabilizer highly recommended for steering axles (only possible with parabolic suspension)



Air suspension with two-leaf link for optimum stability and off-road mobility



Hydraulic suspension maximum cornering and slope stability



HP Premium control lift axle, starting aid, etc.



Offset tandem unit suspension adjusted for the steering axle, better stability and reduction of the tendency to roll

Due to stable Stabilator walls with a smooth inner surface, there is only little wear on the seals, and no tie rods are required for grain transport.



Body



No tie rods
Due to the enormous stability, the use of tie rods is not necessary



Laterally retractable lifting wall
hydraulically controlled

Absolutely smooth
smooth inner walls without screw connections protect the seals



Divided floor
Sliding floor and sliding plate are mounted on wear-free plastic plates, one on top of the other



Push off cylinder
storage in front of the trough, no loss of cargo space

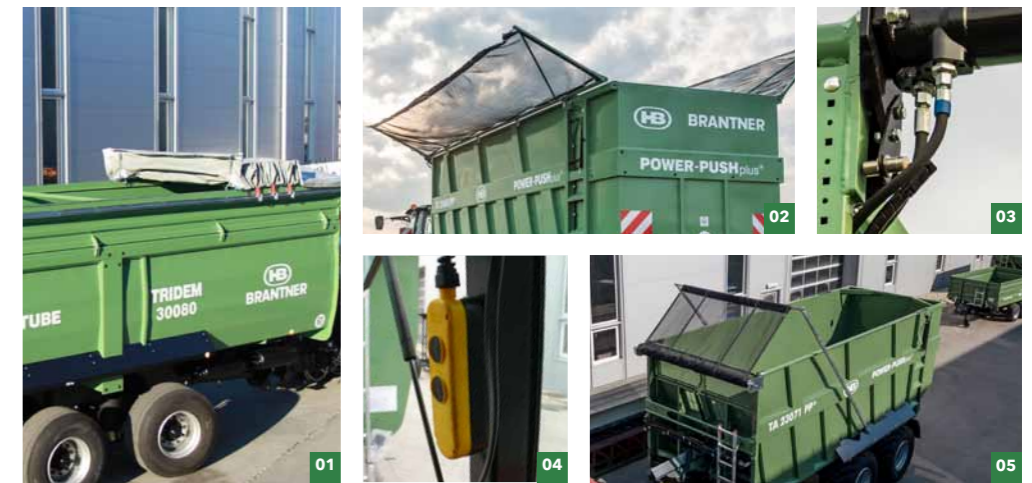


Hydraulic rear wall
additional loading volume due to deep rear wall

load securing

Trailers in modern farming and agricultural operations must be protected against the loss of transported goods. At the same time, the load securing systems partially protect against various weather conditions. BRANTNER cover systems are space-saving, functional and well thought out. The load is protected and safe transport is guaranteed.

- 01 curtainsider
- 02 hydraulic net cover with two side overlapping flaps
- 03 safety sensor prevents opening of the rear panel when the cover is closed
- 04 remote control for electric versions
- 05 net cover hydraulically or electrically controlled



ISOBUS control

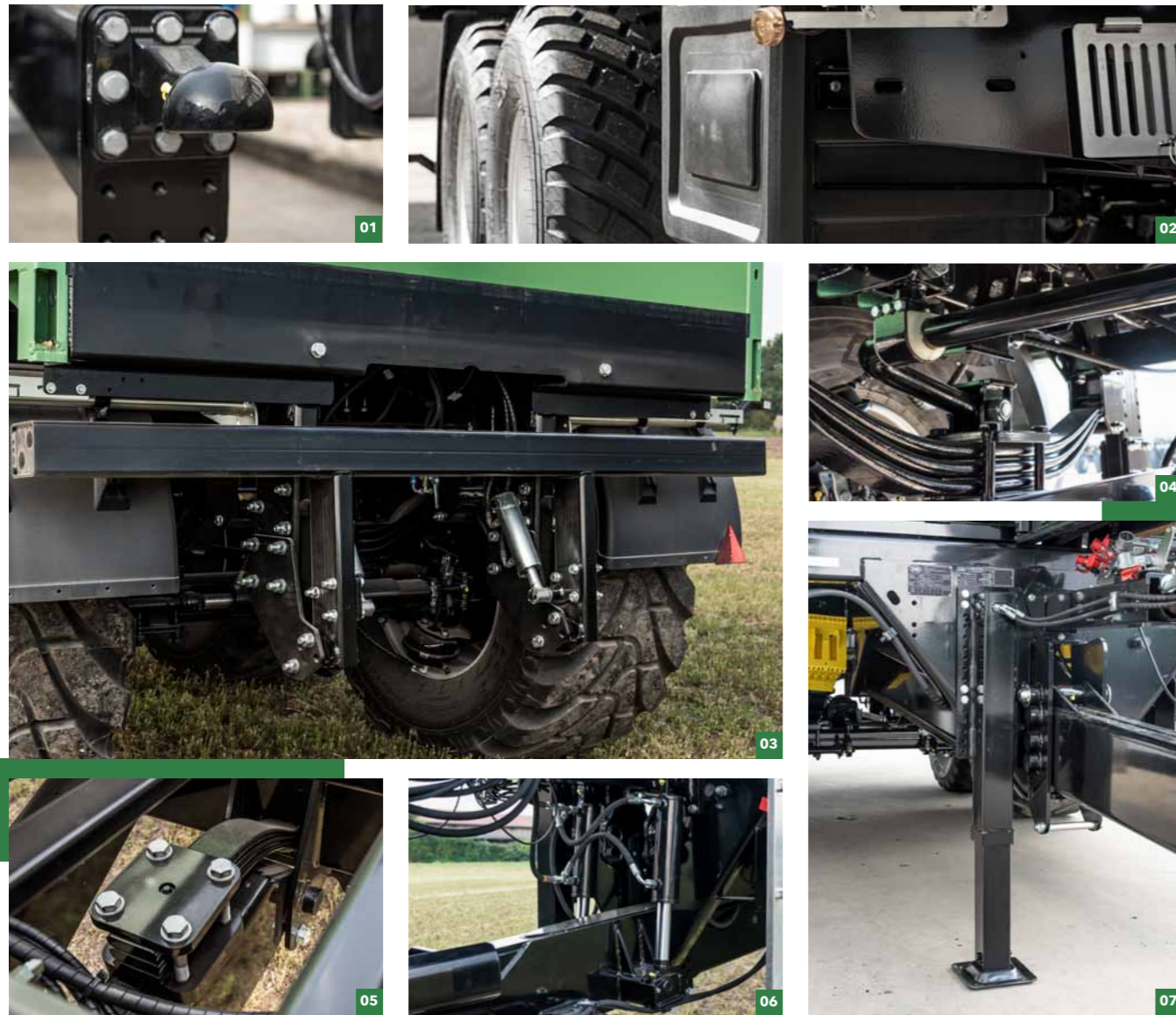
The ISOBUS control enables even more convenient operation of the push-off vehicle in daily use. All the necessary information and control options can be seen at a glance on the tractor terminal.

The connection is just as easy as the further operation. Only the ISOBUS connector and three connecting cables are required. This enables central operation of all selected additional options via a terminal. This eliminates the need for additional control units.



Terminal
functionally designed user interface

Additional equipment



CHASSIS

- 01 Flange towing eye K80
- 02 Toolbox
- 03 Hydraulically foldable underride guard
- 04 Spring stabiliser
- 05 Spring-loaded drawbar with parabolic spring
- 06 Hydraulically sprung tow bar
- 07 hydraulic support leg



BODY

- 01 6/2-way switching valve
- 02 Pressurised valve
- 03 Rear potato slide
- 04 Hydraulically folding front wall
- 05 reinforced side walls 4 mm
- 06 Body 2.300 mm
- 07 Body 2.000 mm
- 08 Body 1.500 mm

Technical data

Models	TA 16055 PP+	TA 20055 PP+	TA 23063 PP+	TA 23071 PP+	TA 24080 PP+	TR 34080 PP+	TR 34090 PP+
Total weight vehicle	16.000 kg	20.500 - 21.000 kg	20.500 - 24.000 kg	20.500 - 24.000 kg	24.000 kg	34.000 kg	34.000 kg
Dead weight	5.700 kg	6.000 kg	6.700 kg	7.300 kg	8.400 kg	9.300 kg	10.200 kg
Support load	2.000 kg	2.500 - 3.000 kg	2.500 - 4.000 kg	2.500 - 4.000 kg	4.000 kg	4.000 kg	4.000 kg
Platform height	1.420 mm	1.420 mm	1.420 mm	1.420 mm	1.550 mm	1.550 mm	1.550 mm
Total length	7.560 mm	7.560 mm	8.260 mm	9.160 mm	10.060 mm	10.200 mm	11.200 mm
Total width	2.550/3.000 mm	2.550/3.000 mm	2.550/3.000 mm	2.550/3.000 mm	2.550/3.000 mm	2.550/3.000 mm	2.550/3.000 mm
Trough size inside	5.500 x 2.380 mm	5.500 x 2.380 mm	6.300 x 2.380 mm	7.100 x 2.380 mm	8.000 x 2.380 mm	8.000 x 2.380 mm	9.000 x 2.380 mm
Body height inside	1.500 mm	2.000 mm	2.000 mm	2.000 mm	2.000 mm	2.000 mm	2.000 mm
Loading capacity	1.500 mm = 20 m ³ 2.000 mm = 26 m ³	1.500 mm = 20 m ³ 2.000 mm = 26 m ³ 2.300 mm = 30 m ³	2.000 mm = 30 m ³ 2.300 mm = 34 m ³	2.000 mm = 34 m ³ 2.300 mm = 40 m ³	2.000 mm = 38 m ³ 2.300 mm = 44 m ³	2.000 mm = 38 m ³ 2.300 mm = 44 m ³	2.000 mm = 43 m ³ 2.300 mm = 49 m ³
Trailer hitch height	410 - 690 mm	410 - 690 mm	410 - 690 mm	410 - 690 mm	430 - 740 mm	430 - 740 mm	430 - 740 mm
Square shaft	120 mm	120 mm	150 mm	150 mm	150 mm	150 mm	150 mm
Track	2.000 mm	2.000 mm	2.000 mm	2.000 mm	2.225 mm	2.225 mm	2.225 mm
required oil quantity	16 l	16 l	20 l	22 l	26 l	26 l	35 l
Standard tyres	385/65 R 22.5 LKW retread	385/65 R 22.5 LKW retread	385/65 R 22.5 LKW retread	385/65 R 22.5 LKW retread	550/60 - 22.5 new (16) Profil I	560/60 R 22.5 new 161 D at choice Brantner	560/60 R 22.5 new 161 D at choice Brantner

Contact

ZENTRALE

HANS BRANTNER & SOHN Fahrzeugbau GesmbH

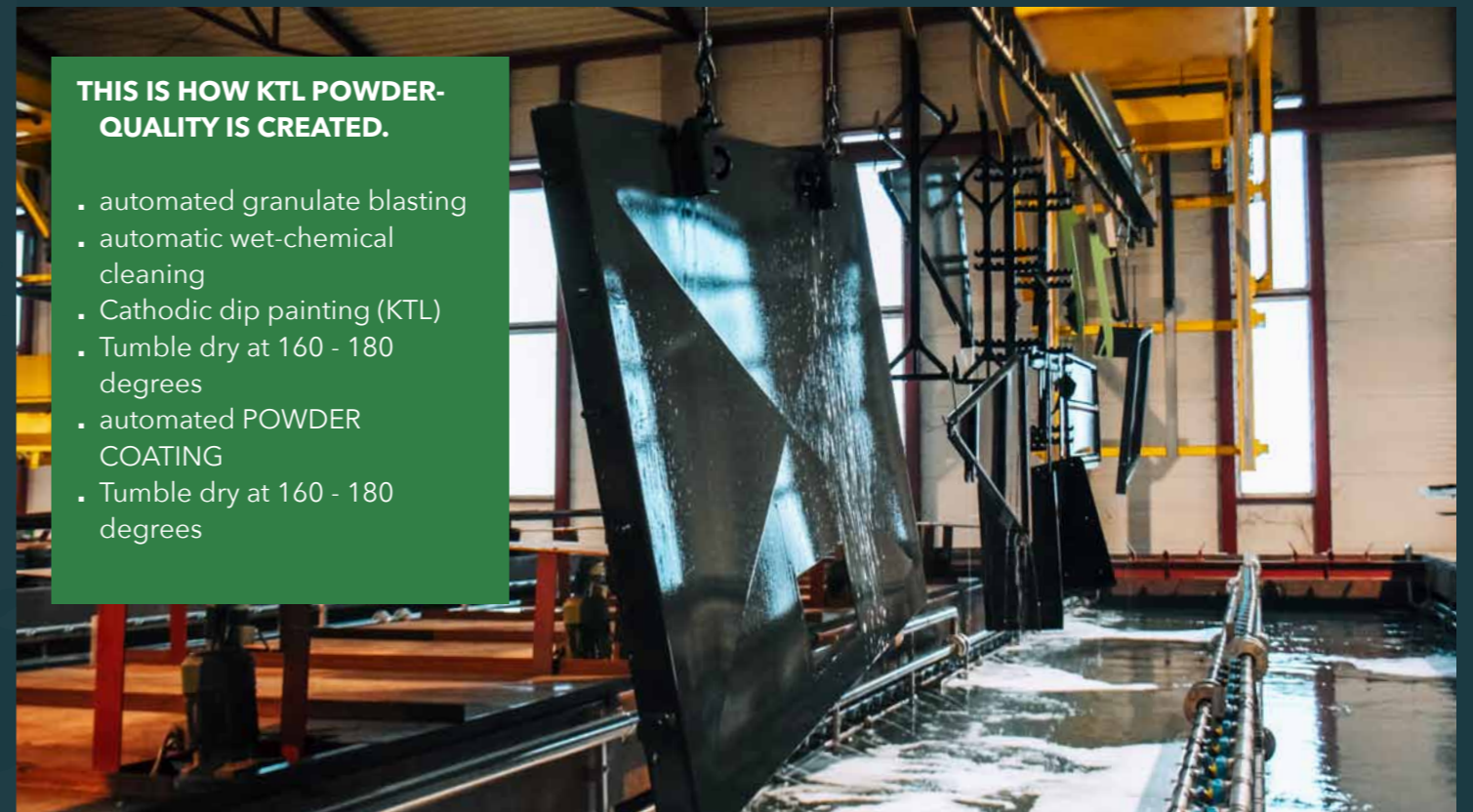
KR Hans Brantner-Straße 8
 2136 Laa an der Thaya
 T +43 (0) 2522 2511-0
 F +43 (0) 2522 2511-50
 fahrzeugbau@hb-brantner.at
 www.hb-brantner.at

Surface technology. Cathodic dip painting & Powder.

THE ADVANTAGES AT A GLANCE

- excellent corrosion protection outside and inside
- improved mechanical resilience
- environmentally friendly technology through powder circulation system
- Coverage of energy needs by 2 megawatt photovoltaic system

Products that are permanently exposed to extreme conditions require the highest paint quality with excellent corrosion protection. Together with the paint specialist Helios, we have equipped our surface technology system with the latest technology. With this modernization, we can further improve our product quality and at the same time rely on environmentally friendly process technology.



THIS IS HOW KTL POWDER-QUALITY IS CREATED.

- automated granulate blasting
- automatic wet-chemical cleaning
- Cathodic dip painting (KTL)
- Tumble dry at 160 - 180 degrees
- automated POWDER COATING
- Tumble dry at 160 - 180 degrees

QUALITY.

State-of-the-art manufacturing process with Laser cutting centres, robot welding systems, "high-end" surface technology, line assembly as well as several quality controls and the final test on the brake test stand ensure the highest product quality.

FLEXIBILITY.

The outstanding quality and the individual production according to customer requirements make every product from BRANTNER Fahrzeugbau a unique specimen that sets standards.

STABILITY.

The stability of the product guarantees stability in value retention. And that over decades!

Values across borders.



Blasting
 mechanical pre-treatment for clean and homogeneous surfaces



KTL & pretreatment
 12 immersion processes for chemical cleaning and subsequent KTL coating



Powder
 automatic powder coating



VEHICLE CONSTRUCTION

HALL CONSTRUCTION

SURFACE TECHNOLOGY

QUALITY. STABILITY. FLEXIBILITY.